



Dear Widmer End families,

What a fantastic week it has been as the school has celebrated World Book Week. It has been great to see the children so enthused about reading and it is always such a fun time of the year to be in school!

We started the week with our browsing of the Travelling Book Fair and the children were then able to choose from the amazing selection of books they had to offer. A big thank you to staff and parents who have volunteered their time to help take payments - we couldn't run the Fair without you! Also, to all parents who have bought books for their children - thank you so much. We have added up the total spend and the commission we are due to receive from the company is a staggering £890 which will all be used to purchase new books for our library.

We had the best day yesterday as we all dressed up for World Book Day. All the children were able to showcase their costumes in assembly and the day was filled with everything 'books'. The choir even did a special performance of the song, 'We like books' with actions! Thank you for supporting this event and preparing the children for the day with their outfits - everyone looked amazing and there was a lot of laughter and joy around school which was so great to see.

This week, we announced the results of two competitions. Firstly, the House Captains chose the winning House mascot designs which will be displayed in the school hall - congratulations to the winners and all the children who entered. We are also pleased to announce the chosen winner of the National Trust's 'Hughenden Easter Trail' competition, where children in KS2 were asked to write a 250 word story with a woodland creature theme - we were given a deer as our animal. Well done, Lexi, for being chosen by the organisers and congratulations! You can go and see Lexi's winning entry in the orchard at Hughenden Manor. All children who entered will receive free access passes to Hughenden as a thank you for taking part.



Shining Star Award

Let's hope the sun continues to shine on us over the weekend. Have a relaxing time.

Mrs Marshall

Dates for your Diary

Monday 10th March

- Science Week

Tuesday 11th March

- PTA Mothers Day Photos

Wednesday 12th March

- A.I.M. High Writing Workshop
- U11s Mixed Netball League Fixture vs Danesfield (home)

Thursday 13th March

- Year 6 Girls Netball Tournament at Pipers Corner

Friday 14th March

- Year 1 Trip to Milestones Museum
- Year 3 Basketball Tournament at Holmer Green

Monday 17th March

- Year 5 Trip to the NHM London

Gift Aid & School Fund

Thank you SO MUCH to all those who have contributed to our School Fund this term so far. This additional funding allows for curriculum enhancements and supplies for your children that otherwise wouldn't be accessed. Keep an eye out on future newsletter issues as when we use the fund, we'll let you know!

Do you know how you can further help fund our school, for free?

As Widmer End has a charitable status (charity number 1084147), we annually claim Gift Aid on all your donations and contributions. This could be anything from our Black History Month workshops, to Knitting Club!

We can only claim Gift Aid on those who have filled in the declaration form and returned to us, so if you are a UK taxpayer, please do this!

giftaid it

Attendance

School average this academic year

← 95.4%

This week:

Reception - 99.44%

Year 1 - 91.01%

Year 2 - 99.23%

Year 3 - 98.35%

Year 4 - 97.92%

Year 5 - 97.57%

Year 6 - 94.98%

Wow, some incredible figures from Reception and Year 2, what healthy habits can they share?



Spotlight On SEND!

SEND Myths debunked

What is SEN?

A child has SEN (special educational needs) if he/she has a learning difficulty or disability which calls for special/additional provision to be made for them that is different to or above that of their same age peers.

What types of SEN are there?

SEN sits within four broad areas of need:

- Communication and interaction
- Cognition and learning
- Social, emotional and mental health
- Sensory and/or physical needs

Do you need a diagnosis to have SEN?

Support in school is based on a child's need(s) and a formal diagnosis is not required in order to receive this.

Does a diagnosis mean a child will need an EHCP?

A diagnosis does not entitle a child to an EHCP (Education, Health and Care Plan), and it is possible to have one without a diagnosis. It is all about the impact of your child's difficulties, not the cause.

Please contact Mrs Ross-Wood for any SEND related enquiries. SEND@widmerend.bucks.sch.uk

SEND Support Phone Line

We are open everyday between 10am and 4pm and until 6pm on Tuesdays. The line is for parents, professionals and anyone with enquiries about SEND in Buckinghamshire.

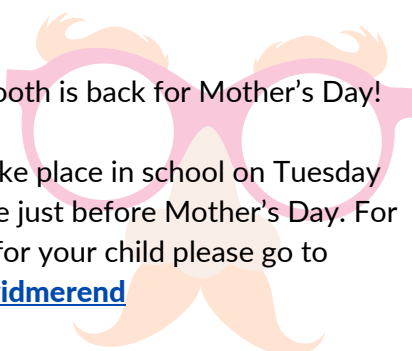
Please note that the support line is open between 10am and 2pm during school holidays and is closed on Bank Holidays.

01296 382135

PTA Photobooth!

Widmer End PTA Photobooth is back for Mother's Day!

The gift experience will take place in school on Tuesday and gifts will be sent home just before Mother's Day. For more details and to book for your child please go to www.pta-events.co.uk/widmerend



World Book Day

This Thursday was World Book Day, a perfect time to celebrate the joy of reading and explore how technology can support literacy. The way we engage with text has changed dramatically over the years. Whether reading captions on social media, instructions in a video game, or an e-book on a digital device, technology plays a major role in modern literacy.

Many digital platforms offer tools to help struggling readers, enhancing readability by making text more accessible and engaging. Please read the free guide, which gives parents ten top tips on how they can help young readers engage in text and foster a love for reading.

Mrs van der Merwe

Pre-School Updates

There was great excitement in Pre-School on Thursday for World Book Day! The children all looked fantastic in their costumes, there were so maybe different ones!

Can you name all the different characters in the photo?

A plea for some resources... We are in need of:

- Playdough
- Paper plates
- Cotton wool
- Easter stickers
- Tissues

Any donations are gratefully received, thank you.

Have a lovely weekend everyone

Deborah





Book Winners!

These lucky children won the paper plate competition for WBD, excitedly choosing their books to take home and read. Thank you to all children who entered, the plates were all AMAZING!



Mabel with her 'Fine Fish'

Sophie with her 'Kool Koala'

Aster with her 'Brilliant B.F.G'

Monty with his 'Lordly Lion'

Year 5 Handball

Year 5 had a fantastic afternoon at the Y5/6 Handball Festival at Holmer Green Senior School today. We were not only lucky with the beautiful weather but also the children's enjoyment and success in their matches. We were split into 4 equal teams; our practice has been paying off, we didn't lose any matches!

4x Fair Play Certificates were awarded at the end of the festival. Out of the 20 teams, Widmer End received 2 of these certificates! Well done to all the children, we are very proud of their sportsmanship.

Miss Larcombe

Merit Awards

Special Merit Award winners this week are:

- Year R - Primrose & Oliver
- Year 1 - Tamanna & Hallie
- Year 2 - Logan & Rose
- Year 3 - William & Niamh
- Year 4 - Margot & Ivy
- Year 5 - Jake
- Year 6 - Lottie & Bella

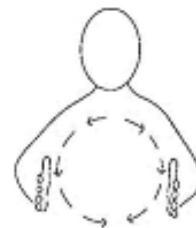


Congratulations and thank you for being excellent role models to your peers!



Learn Makaton With Miss Allen

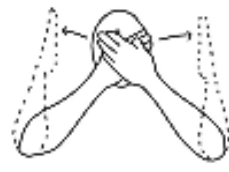
What a fun week we've had! I hope the costumes were enjoyed by your children as much as we enjoyed them.



World



Book



Day

Parent Social Media & Mental Health Webinar

Bucks Mind are hosting two parent webinars this month and would love parents to sign up! You can sign up by either clicking the links in the attached flyer, or here:

- [Microsoft Virtual Events Powered by Teams](#) Tuesday 25th March 2025 @ 2pm
- [Microsoft Virtual Events Powered by Teams](#) Thursday 27th March 2025 @ 6pm

