

# Widmer End Community Combined School & Pre-School Newsletter

Estcourt Drive, Widmer End, High Wycombe, Bucks HP15 6AH

Telephone: 01494 714371

www.widmerend.bucks.sch.uk

office@widmerend.bucks.sch.uk



Friday 12th September (1)

Page 1 of 3

Dear Widmer End families,

We have had a lovely first full week back, with Year 6 being superstars completing the 11 plus. It is always such a contrast having a relaxed summer and then coming back straight to formal testing, but the children all took it in their stride and did themselves proud!

Upon my arrival back, I received the news that Miss Bailey, our brilliant Bursar, is leaving at the end of the month. Miss Bailey is having a career change and is going to be a wedding planner! We are so sad she is leaving us as Miss Bailey has been a fundamental part of Widmer End's successful journey so far and has supported me hugely since I was recruited four years ago. Miss Bailey will continue to support the school until we find a replacement - she is so passionate about the school and wants her replacement to hit the ground running. We wish her all the best in her new role and our loss is their gain.

Please ensure you read the nut allergy section below as this week there have been some lunches with pesto in. This is an allergen for some pupils and it is vital lunches are checked each day to ensure that no nuts are included in your child's lunchbox.

I hope you found Meet the Teacher useful and informative this week - it is a really great way to start the year with clear expectations and starting to build new, positive relationships - both being so important for your child/children's year ahead.

The children have been having lots of fun celebrating Democracy Week. We will announce our new important school roles next week!

Thank you to those of you who attended the PTAs AGM this week. It was so nice to meet some new faces. The PTA does so much for our school and all of your children benefit from their hard work. Without a strong and active PTA we couldn't do many of the additional fun things that Widmer End has to offer - please get involved and support them for this to be able to continue.

Lastly, the school newsletter will be sent out every two weeks moving forward, so dates and celebrations will be included over a two-week period.

I hope you have a restful weekend!

A handwritten signature in black ink that reads 'Mrs Hillier'.

## Dates for your Diary

### Monday 15<sup>th</sup> September

- Year 6 Assessment Week
- All Other External Clubs Begin

### Tuesday 16<sup>th</sup> September

- Teacher Clubs Begin

### Wednesday 17<sup>th</sup> September

- Individual & Sibling Photos

### Thursday 18<sup>th</sup> September

- PE Sessions with Mr Verity - Years R, 1, 2, 4 & 6

### Friday 19<sup>th</sup> September

- Year 6 Trip to the British Museum
- School Governors Visit

### Monday 22<sup>nd</sup> September

- Early Morning Provisions Begin
- Development League Football Match vs Disraeli HOME

### Thursday 25<sup>th</sup> September

- League Football Teams Extra Training Session

### Friday 26<sup>th</sup> September

- Year 3 Trip to the Chiltern Open Air Museum
- Year 5 Handball Tournament at HGSS

### Thursday 2<sup>nd</sup> October

- Development League Football Match vs St Johns HOME

### Friday 3<sup>rd</sup> October

- PTA Hot Dog Day - Book [HERE!](#)
- Year 3 Basketball Tournament at HGSS

### Wednesday 8<sup>th</sup> October

- Years R-2 Drama4All Workshop

### Friday 10<sup>th</sup> October

- Open Morning for Prospective Parents- 9:30am
- Year 4 Netball Tournament at HGSS

## Spotlight On SEND!

Please contact Mrs Ross-Wood for any SEND related enquiries.  
SEND@widmerend.bucks.sch.uk

## SEND Support Phone Line

We are open everyday between 10am and 4pm and until 6pm on Tuesdays. The line is for parents, professionals and anyone with enquiries about SEND in Buckinghamshire.

Please note that the support line is open between 10am and 2pm during school holidays and is closed on Bank Holidays.

01296 382135



## Awards This Fortnight

Shining Star



## Merit Awards



- Year R - The Whole Class!
- Year 1 - Thea, Musab & Musa
- Year 2 - Emily & Luka
- Year 3 - Hannah & Max
- Year 4 - Joseph & Asher
- Year 5 - Thomas M & Cassie
- Year 6 - Myleigh & Veera

**Congratulations and thank you for being excellent role models to your peers!**

## Smartphone Free Childhood Movement

At Widmer End, we know many parents are thinking carefully about when is the right time for their child to have a smartphone.

The Smartphone Free Childhood movement is a growing UK initiative that helps families feel supported in choosing to delay smartphones until around age 14 (Year 9).

This isn't about banning screens, but about giving children the chance to grow, play, read, and build friendships without the pressures of social media and addictive apps too early.

Research shows that delaying smartphones can help reduce anxiety, protect mental health, and support learning and kindness.

The movement offers:

- A parent pact, so families can make this choice together and ease peer pressure.
- Practical resources and advice for parents and teachers.
- Support for all families, including those whose children already have smartphones, to encourage safe and healthy use.

We hope the flyers included with this newsletter are helpful.

You can also find out more at:

[www.smartphonefreechildhood.org](http://www.smartphonefreechildhood.org)

## Attendance

School average this academic year

**98.4%**

**This Fortnight:**

**Reception - 97.78%**

**Year 1 - 97.37% - 9 Late Marks!**

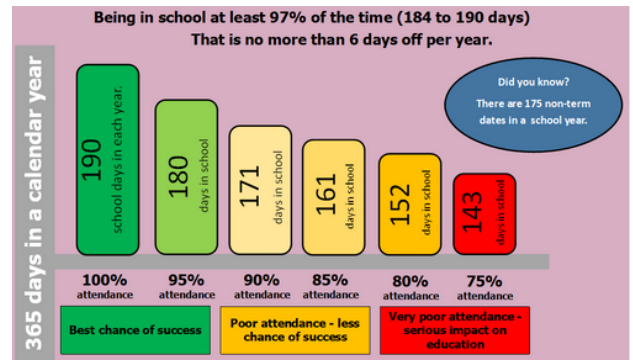
**Year 2 - 98%**

**Year 3 - 97.09% - 1 Late Mark!**

**Year 4 - 99.1% - 1 Late Mark!**

**Year 5 - 99.82% - 6 Late Marks!**

**Year 6 - 98.48%**



### Every Minute Counts!

**LATENESS = LOST LEARNING**  
(Figures below are calculated over a school year)

5 Minutes late each day	3 days lost!
10 Minutes late each day	6.5 days lost!
15 Minutes late each day	10 days lost!
20 Minutes late each day	13 days lost!
30 Minutes late each day	19 days lost!

**Be at the classroom on time and ready to learn!**

## Free Family Learning Courses for Parents

Buckinghamshire Family Learning is offering a fantastic programme of free online courses and workshops this term to support parents and carers. These sessions are designed to help you build your child's skills, confidence, and wellbeing at home.

Available for families with children in years R-6, they cover a wide range of topics; some focused on wellbeing, including ways to help children develop resilience, manage worries, and feel more confident.

In addition, there are specialist SEND wellbeing workshops for parents of children with ADHD, autism, or other additional needs, offering practical strategies to support them.

Flyers are attached to the newsletter email with full details and booking information. We hope many Widmer End families find these useful!



## Pre-School Updates

Welcome back from Pre-School.

This has been our first week of term and our existing children have all returned beautifully and welcomed our new children into the group. It has been wonderful to see them settle into our lovely school.

The weather hasn't been that kind to us this week and so we have participated in some music and movement, which the children have loved. They were able to follow the instructions given and moved parts of their bodies when asked.

Our new families will have received an invitation to join Class Dojo. Please sign up... This is your chance to see what your child loves doing whilst at Pre-School.

Have a lovely weekend and we'll see you all again next week!

Deborah



## Happy School Bags

Thank you for your Happy School Bag donations today. Thanks to you, our PTA have raised £121.05 for the school!

For any other clothing, linens and shoes you may have forgotten to bring, please use our recycling bin on site at any time.



## Staff Car Park Reminder

Please remember that the staff car park is only to be used by staff and pre-booked visitors. Parents are not allowed to drop their children using the car park at ANY time. This is to ensure the safety of everyone and to enable staff to start work without delay. Thank you.

## Nut Allergies

As part of our commitment to keeping all children safe, we'd like to remind families that our school is a nut-free environment. Some children in our community have severe nut allergies, and even trace amounts can cause serious reactions. To help us keep everyone safe, please check your child's lunchbox carefully and avoid sending any foods that contain nuts.

Here are some common items to watch out for:

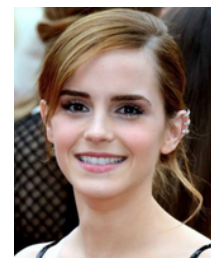
- Nut spreads such as peanut butter & Nutella
- Pesto
- Whole or chopped nuts
- Cereal and granola bars that list nuts in the ingredients
- Cakes, biscuits, or pastries made with nuts
- Chocolates and sweets containing nuts (Chocolates and sweets should not be part of your child's lunch at school)
- Some dairy-free milks and yoghurts
- Salads or sauces that may contain nuts

Always check the ingredient list on packaging—sometimes nuts are hidden in less obvious places!

Thank you for working with us to make our school a safe and welcoming place for every child.

## Value Of The Term

# UNITY



*"It is wrong to allow anyone to dictate your capabilities."*

In our Values assembly on Monday, Mrs Marshall introduced our first value of the year: Unity. She chose Emma Watson, the actor, as our very first inspirational person. The children learnt about her early life and how she got the part as Hermione in Harry Potter, working with this team of people on the films for many years. They also learnt that she has become an incredible ambassador for rights, particularly for women. They will learn more about what Emma has done in our world to inspire us to live our value of unity, next week. Mrs Marshall also displayed our first 'linked value' on the value board in the hall, which this week is 'peace'. Children will now learn more words associated with unity each week in order to understand more about what unity actually means.