



Dear Widmer End families,

It was good to see that nothing really came of the storm today here in Widmer End and the children were able to go outside in the end and enjoy the sunshine! Many thanks for making the slight adjustments this morning at drop off as a precautionary measure.

We have had a happy week with some exciting events: this is all despite it being, on paper, the hardest week of the year and starting with a Blue Monday! Children all dressed in bright clothes on Monday, which gave us all a lift ready to start the week. We then found out yesterday that Mrs Watson had already had her baby on Wednesday, almost two weeks early: a healthy baby boy. We are so pleased for her and are looking forward to meeting little Alfie very soon.

We also had a wonderful Year 6 sharing assembly today - it was jam-packed full of facts all about the Ancient Greeks and the children sang a fabulous song 'acapella' style with no music, just their own hands and feet to create the pulse. What a great way to end the week.

May I take this opportunity to give you some information about our social media accounts. We have a Facebook and Instagram page and you may have received a 'follow or friend request' recently for one or both of these accounts. Please be assured that this was set up so that we could remind you that these pages existed and you could then follow us. This is with the sole intention of raising our profile in the local community and getting our name out there. We would ask that you do not accept the 'friend' request as we have no intention or need to follow any personal accounts, but to 'follow' us instead. This might mean that you do not receive notifications from us so we recommend you become 'friends' with a local group such as '[Widmer End](#)' on Facebook as we post regularly to this group and you could receive the notifications this way instead. Thank you.

Have a wonderful weekend,



Mrs Marshall

Dates for your Diary

Monday 27th January

- KS2 French Day

Wednesday 29th January

- Church Assembly

Friday 31st January

- Full Mufti Day For Save The Children, donate [HERE](#)
- Chiltern Music Association hosting a special music assembly for EYFS/KS1

Monday 3rd February

- Children's Mental Health Week

Tuesday 4th February

- League Football match vs Hughenden

Wednesday 5th February

- Year 6 Trip to The Lincolnsfield Centre

Friday 7th February

- PTA Hot Dog Day - Book [HERE!](#)

Tag Rugby Club Starts at Widmer End

Our fantastic local High Wycombe Rugby Union Football Club are starting a tag rugby club on Wednesdays after school, for years 4, 5 & 6. The coach, Scott is very keen to teach the children at all levels!

Attached to the newsletter email is the updated club list and the introductory letter. The club starts after half term and will run for 6 weeks. Depending on uptake, it will continue! Please click [HERE](#) to book your child into this fantastic club!



Attendance School average this academic year

← 95.4%

This week:

Reception - 97.5%

Year 1 - 93.81%

Year 2 - 96.67%

Year 3 - 96.3%

Year 4 - 98.44%

Year 5 - 95.31%

Year 6 - 94.19%

The flu has well and truly arrived! We are so thankful that most have had their vaccination to keep themselves and others, healthy.



Spotlight On SEND!

SEND Support Phone Line

We are open everyday between 10am and 4pm and until 6pm on Tuesdays. The line is for parents, professionals and anyone with enquiries about SEND in Buckinghamshire.

Please note that the support line is open between 10am and 2pm during school holidays and is closed on Bank Holidays.

01296 382135

Walking With You - Parent led support group for anyone supporting children and young people, up to the age of 25, experiencing mental health difficulties

Take part in discussing shared experiences with other parents and carers as well as having mental health professionals from CAMHS on-hand to support and answer any questions you may have.

Monday, 27th of January, 10am – 11:30am - (TEAMS)
THEME: Family Hub information (Guests from the Family centre)

Monday, 24th of February, 10am – 11:30am (TEAMS)
THEME: ASD + ADHD

If you would like to join a session/s, contact:
 Roxy Uritescu Participation Lead, Bucks CAMHS at
Roxy.uritescu@oxfordhealth.nhs.uk

Please contact Mrs Ross-Wood for any SEND related enquiries. SEND@widmerend.bucks.sch.uk

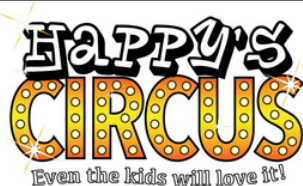
A.I.M High Maths Day

The children and I had a fantastic, interactive day at Beechview Academy. The best activity was where the children had to use maths to solve a 'murder mystery'! This challenged them to think outside the box more. Jacob said, "Ah... I want more" at the end of the day!

Mrs Bejan

Save The Date!

The PTA are excited to announce that we have 'Happy's Circus' returning to our school! They will be setting up their big top and holding an evening performance for us on Wednesday **4th June 2025** so please pop the date in your diary and let friends and family know. Watch out for more information and ticket sales coming soon!



Wraparound Care Shout Out



Friends at Play is our brilliant wrap around care provider, offering breakfast & after school clubs.

We would love to welcome your child(ren) to our warm, safe and fun environment! We provide lots of different activities, such as: colouring, junk modelling, painting, playdough, malleable tray (sensory play), outside play, activities chosen by the children, quiet time, reading, help with homework and more. Our team are always on hand to support the children and cater for their needs.

Why not book your child(ren) into our calm & nurturing breakfast club? Come and join us for breakfast, where we provide a selection of healthy options, including: cereals, pancakes, croissants, toast, drinks, etc. Over breakfast we chat to the children about their busy school day ahead and provide child led activities.

We are running a special offer up until half term for both clubs for all new bookings:

For anyone booking more than one breakfast or afternoon club session you will receive the first session free of charge!

We accept 30 hour funding, tax free childcare scheme and childcare vouchers.

Our team hope to welcome you and your child(ren) soon!

Angie McGinnis - Friends at Play

View contact details and how to book, via our website [HERE](#).





Pre-School Updates

This week in Pre-School, we have talked about the police and how they can help us. We have looked at what they wear and what they carry on their uniform. Looking at the equipment they use, we were able to clap the syllables for each word such as handcuffs (2 claps)!

The children loved drawing round their hands and then using ink, they printed their fingerprints onto their hand pictures. We used our fine motor skills to place beads on fingerprint images, make police badges and put a police car picture together.

Again using our motor skills, the children threaded beads onto laces. They used their imaginations to tie the laces around the table legs to make zip wires which was great fun.

What a busy week we've had!

Deborah

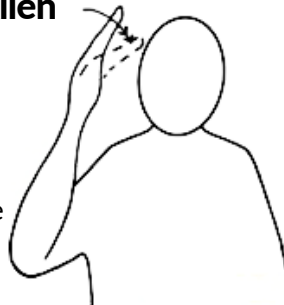


Year 6 Sharing Assembly

Our Year 6s led a fantastic assembly, sharing their newly learned knowledge with the rest of the school and their parents and loved ones watching. We learned about light prisms and were serenaded by an acoustic rendition of 'We Will Rock You'! Well done, Year 6. We look forward to seeing your confidence grow as you progress in your final primary school year!

Learn Makaton With Miss Allen

We all must stay safe in the **wind** this weekend! We really are encountering all the weather that winter has to give, this year. Fan your hand to create a gentle breeze on your head, to make the sign for **wind**.



Snowdrop Walk



Join Child Bereavement UK's family-friendly Snowdrop Walk at West Wycombe Park on **Sunday 2 February**.

Enjoy a walk in beautiful surroundings before planting a snowdrop in memory of someone important, if you wish.

Children can enjoy a treasure hunt with a small prize for each child at the end, and you can complete your walk with hot food, cakes and refreshments at West Wycombe Village Hall, where further children's activities will take place.

For more information, to purchase tickets or to sign up to volunteer at the event, please visit:

[Snowdrop Walk in Buckinghamshire | Child Bereavement UK](#)

Early bird discounted prices available.

Student Shout Out!

Alice has performed in a production of Annie at the Waterside Theatre in Aylesbury this week! After a successful audition and months of rehearsals, she's worked really hard and we hope they were successful. What a fantastic achievement. Well done, Alice!

Merit Awards

Special Merit Award winners this week are:

Year R - George & Mabel
 Year 1 - Isaac & Shannon
 Year 2 - Imogen & Nancy
 Year 3 - Eliza & Milo
 Year 4 - Harry & Minnie
 Year 5 - Austin & Amelia
 Year 6 - Elora & Chloe B



Congratulations and thank you for being excellent role models to your peers!