



Dear parents & carers,

I am writing today's school newsletter in place of Mrs Marshall, as she and the Year 6 team have spent, what I'm sure has been a very memorable week in sunny Devon! I can confirm a gaggle of excited children left early on Monday morning with suitcases full to the brim - I look forward to hearing all about their residential trip and know families will be really happy to welcome them home today.

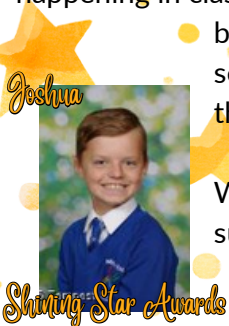
Here in school, we started the week learning about a new inspirational person in our values assembly. Steve Irwin, and his conservation work helped introduce pupils to this week's citizenship target of 'caring for our world'. Do you know what age Steve was when he caught his first venomous snake? Your children do, and you might be surprised...be sure to respond with a resounding 'CRIKEY!'

Some exciting learning and activities have been going on across school this week - I managed to spot some very impressive castle structures designed by Year 3 in their DT lesson, and was delighted to see the enjoyment being had in the hall in Year 2 as they took part in parachute games for PE - I have to say their behaviour for learning was impeccable, making me feel incredibly proud of them all. Finally, the Reception class visit to the Natural History Museum in Tring today is sure to see their busy, enquiring minds bring back to the classroom a wealth of interesting facts and information to share with us all next week!

Looking ahead, transition day seems to be at the forefront of everyone's thoughts with many conversations about this happening in class. Teachers are looking forward to meeting their new classes, with Mrs Marshall sharing who this will be in our assembly on Tuesday. For Year 6, we wish them lots of luck for their upcoming visit(s) to their secondary schools, and know that whilst many nerves might be felt, they will all shine bright and make the best first impression.

Wishing all Widmer End School families a happy and restful weekend, and hoping you get to enjoy the sunshine.

Mrs Ross-Wood



Dates for your Diary

Monday 30th June

- Friendly Football Match vs Stokenchurch (home)

Tuesday 1st July

- Transition Day

Wednesday 2nd July

- Year 5 Woodrow Residential
- 2nd Transition Day (Some Year 6s)
- Reception Induction Stay & Play

Friday 4th July

- Reception Class Sharing Assembly
- Year 6 Cricket Tournament at TGMS
- PTA Hot Dog Day

Tuesday 8th July

- Reception Induction Stay & Play

Wednesday 9th July

- New Reception Parents Induction Meeting
- ZKT Dance Assembly
- Year 6 Leavers Dress Rehearsal

Thursday 10th July

- Perform 'Jungle Rumble' Drama Workshops - YR, Y1 & Y2
- Reports Coming Home
- Year 6 Leavers Evening Performance

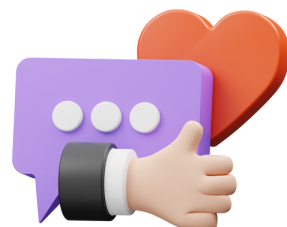
Monday 14th July

- Rocksteady Concert

Staff Recognition

Our link to share your appreciation of any staff member is live until the end of term. Please click the link [HERE](#) to thank or show your appreciation if you feel it is merited. You can complete as many nominations as you wish!

Thank you.





Spotlight On SEND!

Reminder:

For all children who have targets and provision set out in a SEN Support Plan, parents should have been able to access a review of their previous plan by logging into the parent account you have set up on Edukey - Provision Map.

<https://edukeyapp.com/parent/login>

You can also find a copy of your child's latest plan and the target set out - due to be discussed and agreed with you in a meeting held with your child's class teacher.

Please contact Mrs Ross-Wood for any SEND related enquiries. SEND@widmerend.bucks.sch.uk

SEND Support Phone Line

We are open everyday between 10am and 4pm and until 6pm on Tuesdays. The line is for parents, professionals and anyone with enquiries about SEND in Buckinghamshire.

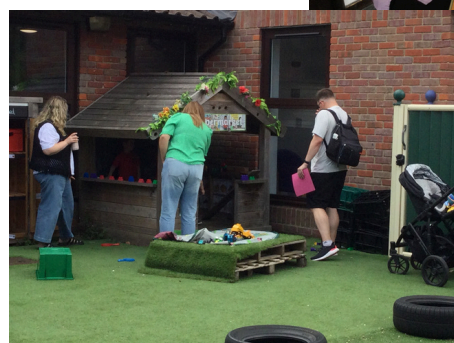
Please note that the support line is open between 10am and 2pm during school holidays and is closed on Bank Holidays.

01296 382135

Early Years Parent Playtime

This week in Early Years we had our final Stay and Play session of the year with our current families. We had an amazing turn out of 14 adults both in Reception and in Pre-School who came to play with their children and spend some time exploring the environments with them. It's always so lovely to see how the children light up and celebrate their achievements with their families, thank you again to everyone who took time out of their busy schedules to attend!

Miss Ilić



Attendance

School average this academic year

95.7%

This week:

Reception - 86.11% - 1 Late Mark!

Year 1 - 94.55% - 2 Late Marks!

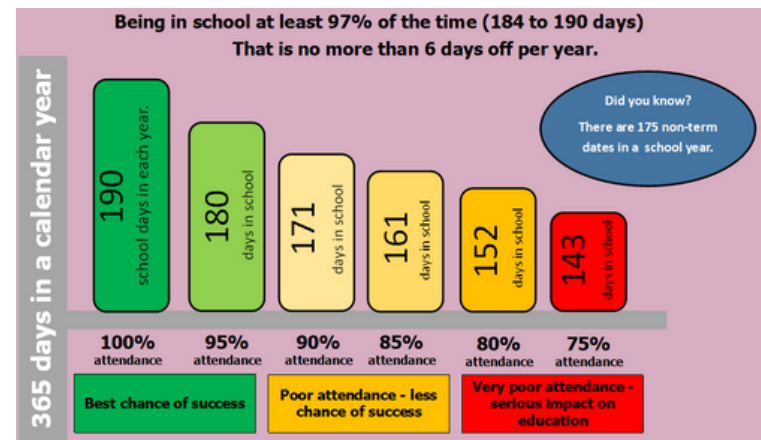
Year 2 - 97.2% - 3 Late Marks!

Year 3 - 98.85% - 4 Late Marks!

Year 4 - 97.22%

Year 5 - 95% - 3 Late Marks!

Year 6 - 97.71% - 3 Late Marks!



Every Minute Counts!

LATENESS = LOST LEARNING

(Figures below are calculated over a school year)

5 Minutes late each day	3 days lost!
10 Minutes late each day	6.5 days lost!
15 Minutes late each day	10 days lost!
20 Minutes late each day	13 days lost!
30 Minutes late each day	19 days lost!

Be at the classroom on time and ready to learn!

Year 3's Castle Creations

In Year 3 Design and Technology, we had a fantastic time building our own castles! We explored medieval features like drawbridges and battlements, planned our designs, and used nets to bring them to life. The children were excited to share their brilliant creations with the class and I think they look fabulous!

Miss Dodd





Pre-School Updates

During this week we have been caring for our butterflies that came out of their cocoons over the weekend. We have fed them fruit such as banana and apple and given them sugar water to keep them healthy and strong. The children were all very excited when we took them into the sensory garden to release them. They needed a little encouragement to fly out to the net and find new homes but once out, they spread their wings and flew away.

Maybe you'll see them around school or in your garden.

Have a lovely weekend,

Deborah



Reception Visit Tring Natural History Museum

Reception had a lovely day today at Tring Natural History Museum. They loved seeing all the animals and finding out about different fossils, learning about which ones belonged to which dinosaur!

They constantly used their curiosity to ask some poignant questions asked amazing questions and behaved impeccably. Proud of their curiosity, courage and respect during the entire day.

Miss Davis



Value Of The Term

KINDNESS

Week 8 : Inspirational Figure

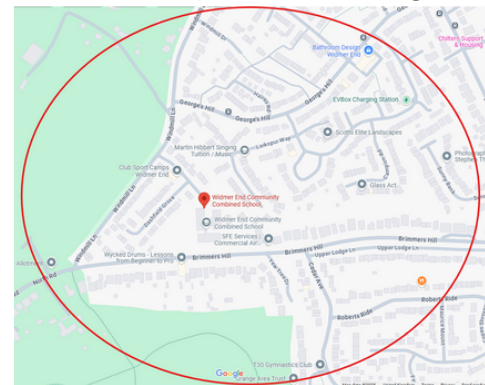


Steve Irwin

*"If we save our wild places,
we will ultimately save ourselves."*

Walking Bubble

Did you know that we have a recommended walking bubble of 5-10 minutes? We are very strict on limiting parking inside the school grounds to staff only & proactively encourage our families to walk, scoot or cycle from a 5 minute parking spot (or home!)



School Lunches

Our midday supervisors have been noticing that again, lots of children aren't eating what their parents have ordered for them.

Please can you ensure that you order your child(ren)'s school lunch with them, so they take ownership of their choices? We never want to see a child upset at lunch time, this is often their favourite time of the day!

Merit Awards

Special Merit Award winners this week are:

- Year R - Freddie & Myla
- Year 1 - Henry A & Bethany
- Year 2 - Ivy & Maisie
- Year 3 - Abbie & Emma
- Year 4 - Dylan & Emily
- Year 5 - Jesse, Evan & Monty
- Year 6 - Charlie & Ella



Congratulations and thank you for being excellent role models to your peers!